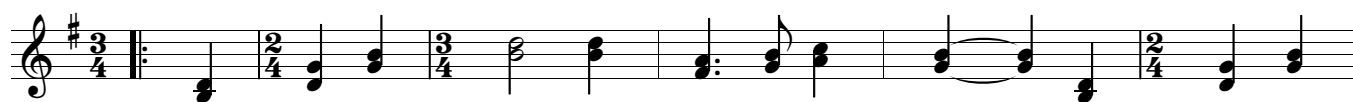


Hab i an scheana schekata Schimmel

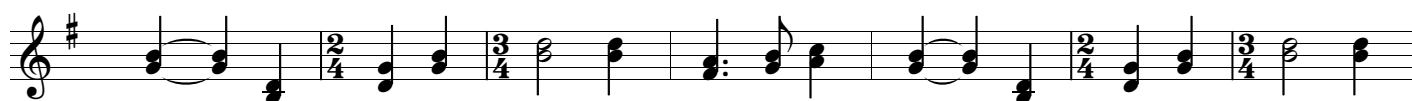
Schweinauer (Zwiefacher) aus dem Ries



1. Hab **G** i an **G** schea - na **D7** sche - cka - ta **G** Schim - mel, der **G** macht in
2. Hab i mei Lei(n) en Doa - na na g'sät, hat mir da



1. **G** mei - nem **D7** Kopf a Ge - **G** tüm - mel. Der **D7** Ha - ber so **G** teu - er, koi **D7** Heu in da
2. Wed ins Was - ser nei g'weht, en Doa - na na g'sät, ins Was - ser nei



1. **G** Scheu - er, was **G** füat - ter **G** i mein **D7** Schi - me - le **G** heu - er, was **G** füa - ter **G** i mein
2. g'weht. Ei du - ri - de, ei du - ri - dei - dom, ei du - ri - de, ei



1. **D7** Schim - me - le **G** heu - er?
2. du - ri - dei - dom.



C C G7 C C C



G7 C G7 C G7 C C



C G7 C C C G7 C